



**SKYRENA**  
BUNDLE OF JOY

Project by  
M.D DEVELOPERS



Ar. Pankaj Kamble

RCC Consultant

Er. Vijay Bhandgar

Legal Advisor

Advt. Sandip Ghate  
Advt. G. S. Yavatkar

Design & Layout

Prowiz Design



Site Address:- Skyrena, MD Developers, Shevalwadi Rd, Sr. No. 68, Manjari Bk, Tal. Haveli, Dsit- Pune 412307.  
Office Address:- MD Developrs, More Heights, Ground floor ,Solapur Road Manjari farm ,Tal Havalali Dist. Pune ,412307  
Email : skyrenadevelopers@gmail.com

Call : +91 7059763333 / 7059683333

DISCLAIMER : The images and material contained in the Brochure are conceptual illustrations. Only the Actual Agreement (to be entered into between the flat purchaser and the developers), shall be binding on the Parties and the actual layouts, and specifications of the individual flat and any amenities to be provided, stated therein shall be final and conclusive of the agreed terms, offered to the Purchaser by the Developer. The Developer reserves all rights to make alterations, modifications, and changes in the sanctioned plan, lay out specification, flats/units, elevations, designs, and amenities that will be made available in the project.



M

Maximum

O

Opportunity,

R

Refined

E

Elegance

"MORE" is more than just a word—it's a philosophy. It represents the pursuit of abundance, the desire for better, and the aspiration to live beyond expectations. More is about offering more space to breathe, more opportunities to grow, and more moments to savor.

In essence, MORE means living life fully, exploring possibilities, and seeking what truly matters.

Enter the world of

MORE

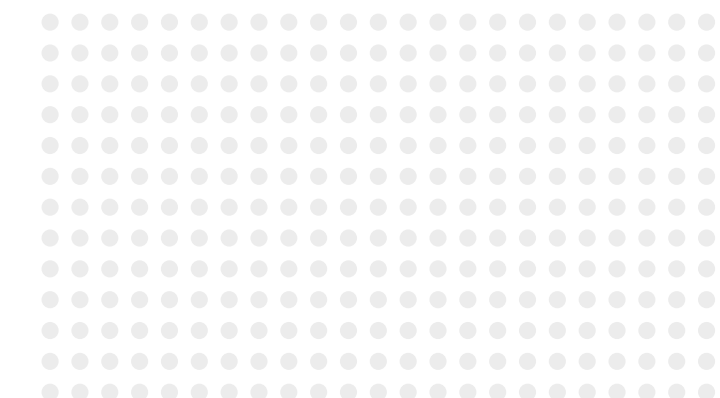
with Skyrena



At Skyrena,  
**MORE** is not just a promise—  
it's the way you live

Here, every corner is designed to elevate your lifestyle,  
offering you **more** freedom, **more** convenience and  
**more** joy.

Because at Skyrena, more means **more** opportunities,  
**more** possibilities, and more of the life you've always  
dreamed of.





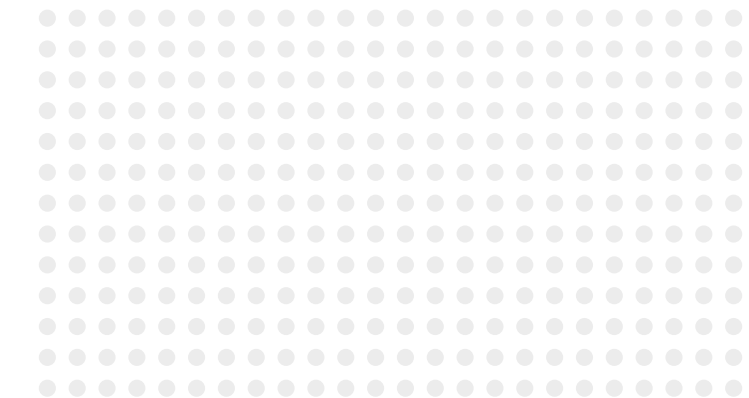
# MORE

*Smile*



home isn't just about space  
it's about the **happiness** it holds.

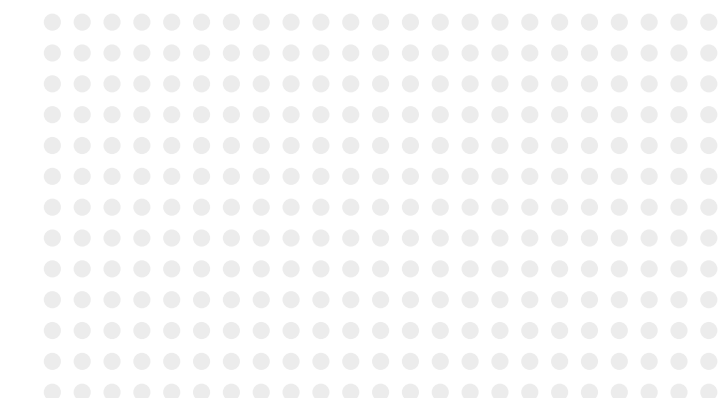
Experience the joy of a home where every moment becomes a cherished memory. With spacious interiors and thoughtfully designed living spaces, our 2 and 3 BHK homes offer you the freedom to enjoy **more** laughter, love, and togetherness. Whether it's sharing a meal, celebrating milestones, or simply relaxing, you'll have all the room you need to create priceless moments with your loved ones.





## Welcome to Skyrena – Where More is a Way of Life

Discover spacious 2 and 3 BHK homes designed for **more—more** space, **more** comfort, and more amenities. With airy interiors, thoughtful layouts, and luxurious touches, Skyrena redefines modern living. Here, every detail brings you closer to the life you've dreamed of. Because at Skyrena, your aspirations deserve nothing less than the best.



MORE

**A luxurious lifestyle began here.** Skyrena offers gated community living experience along with great amenities.

**G+9 Floor** building with mesmerizing surrounding. Top end living facilities that redefine contemporary living.

Skyrena offers 44 numbers of lavish 2 & 3 BHK Flat. **2BHK** Luxurious Flat with carpet area ranging from **848 Sq.Ft to 922 Sq.Ft.**

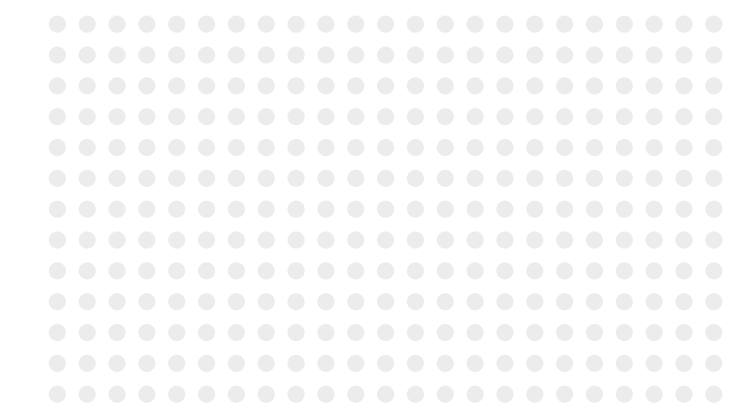
**3BHK** Luxurious Flat with carpet area ranging from **1170 Sq.Ft of 1290 Sq.Ft.**





## More Opportunities at Skyrena

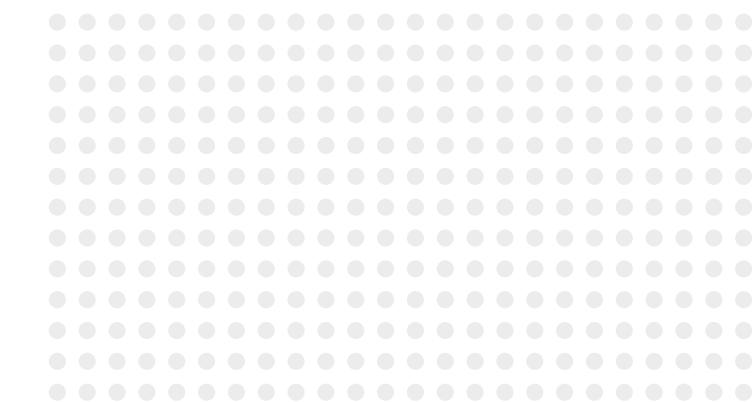
Unlock the potential of your business with 7 exclusive commercial shops at Skyrena. Designed to offer more space, **more** visibility, and more footfall, these retail spaces are perfect for businesses looking to thrive in a prime location





## Spacious Lobby and Dual Elevators

At Skyrena, the experience begins the moment you enter. Our spacious lobby is designed to make a lasting impression, offering a welcoming and elegant space that sets the tone for luxury living. With two elevators for your convenience, you can enjoy quick and easy access to your home, ensuring comfort and efficiency every day.





## Parking

Skyrena offers an advanced 2-step basement parking system, providing ample space for cars. Designed for convenience and efficiency, this state-of-the-art parking solution ensures that your vehicles are safely stored, with easy access and minimal hassle. Enjoy the peace of mind that comes with abundant, well-organized parking space right at your doorstep.

MORE





## Terrace Amenities

Our rooftop amenities are designed to elevate your lifestyle. Step into the elegant lobby that sets the tone for sophistication, offering a warm and inviting atmosphere. For families, the children's play area provides a safe and fun environment where little ones can explore and play.

Stay in shape with our state-of-the-art gym, or enjoy the serene open garden, a peaceful retreat that offers panoramic views and a breath of fresh air. Whether you're relaxing, socializing, or working out, our rooftop amenities offer a perfect blend of comfort and luxury for all.



Gym



TERRACE DECK



Children Play Area



Open Garden



Peaceful Leisure Nook

# CUT SECTION

Welcome to Skyrena – a unique residential project designed for those who seek sophistication, comfort, and space. Each 2 and 3 BHK unit is meticulously crafted to provide an elegant living experience, offering ample natural light, modern amenities, and serene views."

## 2 BHK

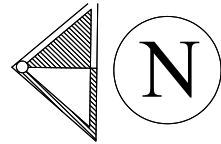
- A Master Bedroom
- B Bedroom
- C Kitchen
- D Living Room
- E Toilet
- F Balcony
- G Dry Balcony



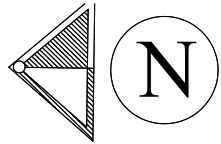
## 3 BHK

- A Master Bedroom
- B Bedroom
- C Kitchen
- D Living Room
- E Toilet
- F Balcony
- G Dry Balcony





Flat type	FLAT Nos	CARPET AREA IN SQ.M.	CARPET AREA IN SQ.FT.
2BHK Type 1	101, 201, 301, 401, 501, 601, 801, 901	81.00	871.88
2BHK Type 2	102, 202, 302, 402, 502, 602, 802, 902	78.84	848.63
2BHK Type 3	103, 203, 303, 403, 503, 603, 803, 903	85.61	921.51
2BHK Type 4	104, 204, 304, 404, 504, 604, 804, 904	82.76	890.83
3 BHK Type 1	105, 205, 305, 405, 505, 605, 805, 905	119.48	1286.08



Flat type	FLAT Nos	CARPET AREA IN SQ.M.	CARPET AREA IN SQ.FT.
2 BHK Type 1	701	81.00	871.88
3 BHK Type 1	702	108.71	1170.14
2 BHK Type 2	704	82.76	890.83
3 BHK Type 2	705	119.48	1286.08

# Amenities

- + Solar Panel
- + Smart Elevator
- + Elevated Car Parking
- + Sitouts
- + Children Play Area
- + Peaceful Leisure Nook
- + Terrece Lawn
- + Spacious Lounge
- + Gym
- + Plantation
- + Security
- + Yoga/ Meditation Space
- + EV Charging Points
- + CCTV Surveillance
- + Rainwater Harvesting
- + Energy Efficient Lighting}
- + Sustainable Waste Management
- + Smart Building Management System
- + Composting Facility
- + Business Bay area
- + Community Space
- + Huge Lobby Space



# Specifications

## STRUCTURE

Earthquake Resistant RCC Frame Structure

Gypsum Plaster for Internal Walls

## FLOORING

Vitrified Tile Flooring [ size 800mm X 800mm ]  
for Living, Kitchen, Dining and Common Passage.

Anti-Skid Tiles in Toilets & Terrace

Wooden Flooring in Master Bedroom

## KITCHEN

Granite Kitchen Platform with Stainless Steel Sink

Provision for Water Purifier in Kitchen.

Separate Taps for Drinking and Washing Water

## DOORS

Living Room: Decorative Main Door with Safety Lock  
and Nameplate

Bedrooms: Decorative & Laminated Flush Doors

Bathroom: Laminated, Flush Door with Granite  
Frames.

Balcony: UPVC Sliding Door for Hall Balcony

## Wall

Brick/Block for walls with gypsum plaster for internal walls.

## CONVENIENCE & SECURITY

CCTV Security for Common Area on Ground  
Floor

Gated Community

Intercom Facility from Main Gate

Digitally Secured Entrance Lobby

## TOILETS

Designer Glazed Dado Tiles on Walls up to  
Lintel Level

Jaguar / Grohe or equivalent C.P Fixtures in  
all Bathrooms

Wall hung EWC in all Bathrooms

Built-in Counter Washbasin

## WINDOWS

UPVC Windows with Mosquito Mesh for all Bedrooms

## ELECTRIFICATION

Concealed Copper Wiring with MCB

Cable TV and Telephone Point in Living Room  
and Master Bedroom

A.C. point in Living Room and Master  
Bedroom

## OTHERS

Anti-Termite Treatment

Fire Fighting System for Building

KLAUS - Mechanized Puzzle Parking

Solar Water Connection for Master Bedroom

Decorative Entrance Lobby with Name Board  
and Letterbox

Two Automatic Lifts with Generator Backup

24 hours Power Backup for Common Utilities  
like Lifts, Pumps, Lights in Common Passages,  
Parking, etc.

Internal Trimix Concrete Road with a  
combination of Paver Blocks

Provision for Broadband Connection in  
every Flat

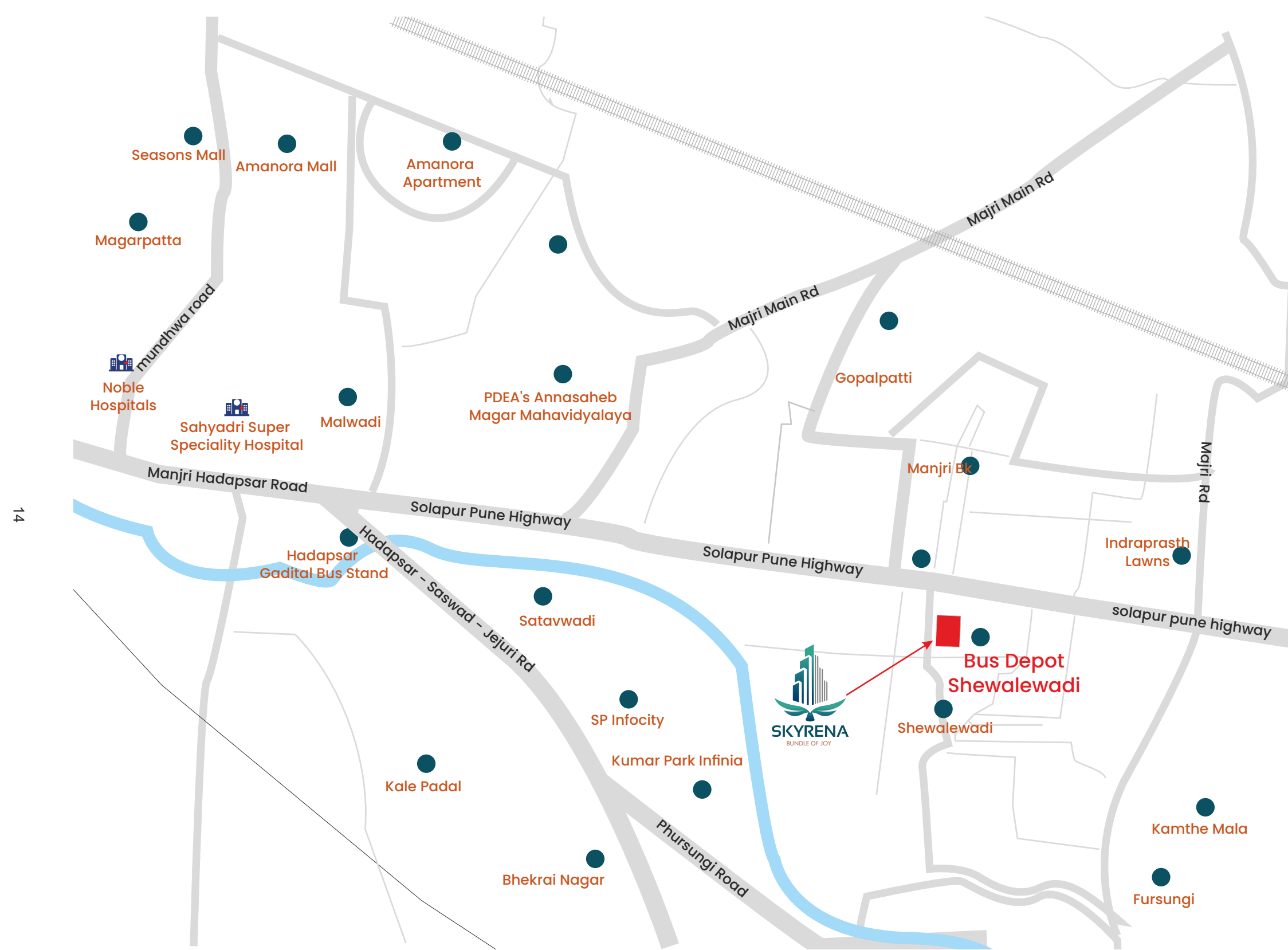
UGWT with Automatic Pumping System

## PAINTING

Superior OBD Paint Finish for Internal Walls

Superior Quality Paint for External Walls

Apex paint for exterior walls.



## Live Life Fullest From Every Angle of Home

A home that centres on you, on your needs and your wants, that is what you get at Skyrena. A perfect amalgamation of warmth and precision. So step in and start living your life from a new angle.

